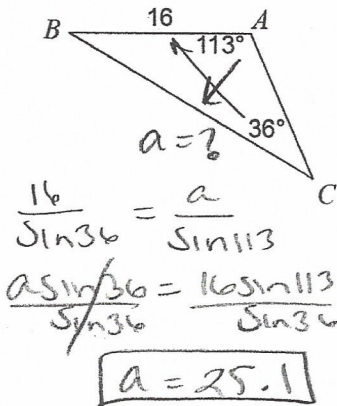
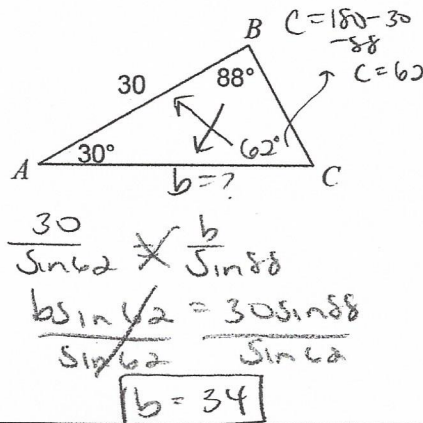


I. Using the Law of Sines, find what is asked. Round to nearest tenth. Must show work!

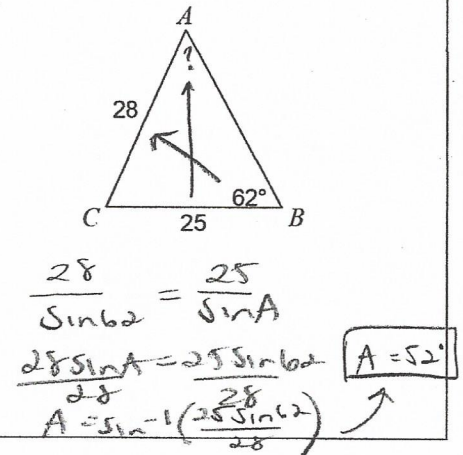
1.) Find: side a



2.) Find: side b

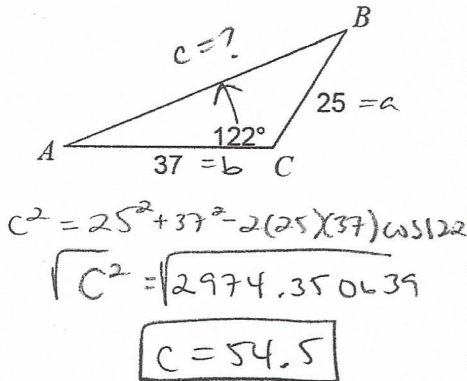


3.) Find: angle A

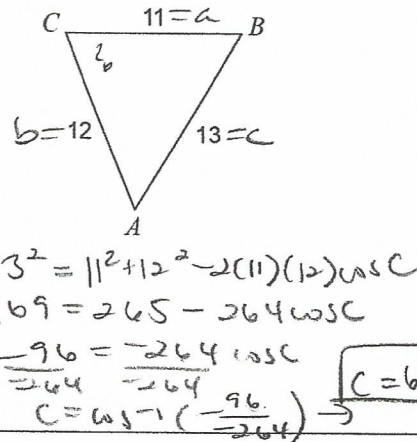


II. Using the Law of Cosines, find what is asked. Round to nearest tenth. Must show work!

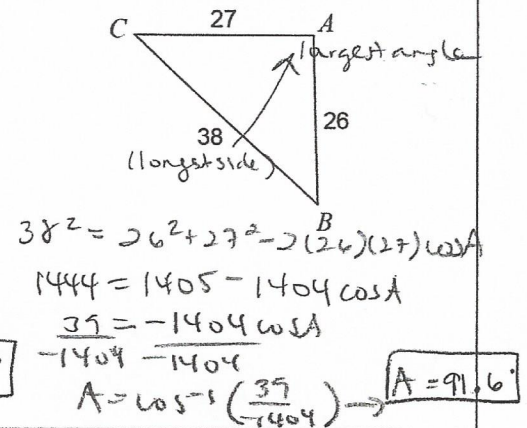
4.) Find: side c



5.) Find: angle C

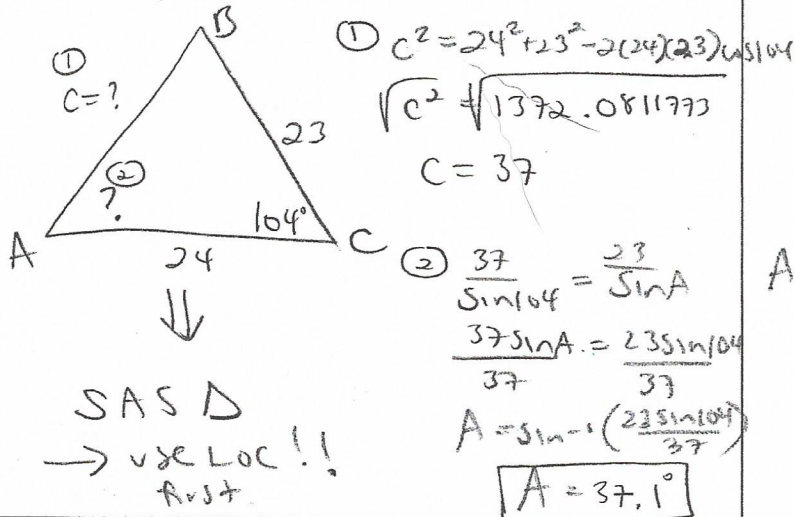


6.) Find: largest angle



III. Using the BEST METHOD, find what is asked. Round to nearest tenth. Must show work!

7.) Given: $C = 104^\circ$, $a = 23$, $b = 24$
Find: angle A



8.) Given: $A = 61^\circ$, $a = 28$, $c = 17$
Find: side b

