

1. Using the given data – Make a pie chart and a bar graph of the information.

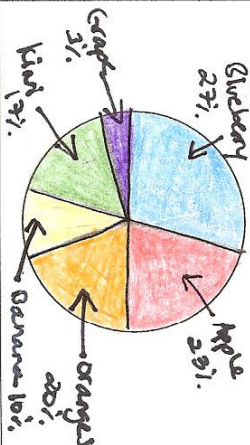
You must use different colors and label within the displays.

1.) A survey at a local mall was taken about people favorite types of fruit. Below is what was found:

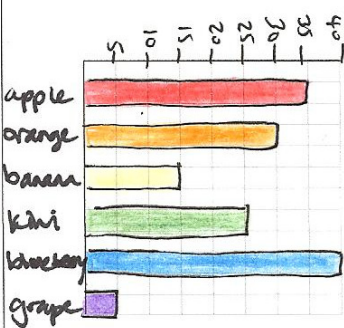
apples	oranges	bananas	kiwifruit	blueberries	grapes
35	30	15	25	40	5

Data Display # 1 – Categorical: Pie Chart

apple	orang	bana	kiwi	blue	grape
35	30	15	25	40	5
23%	20%	10%	17%	27%	3%
83°	72°	36°	61°	97°	11°



Data Display # 1 – Categorical: Bar Graph

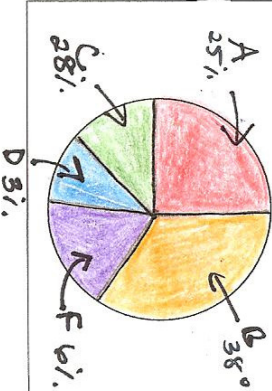


2.) In a recent test, this many students got the following grades:

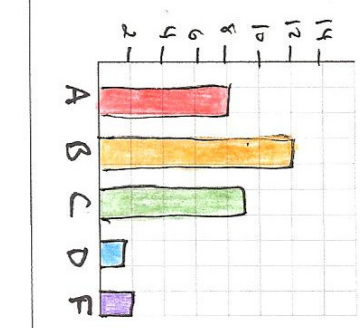
A (100 – 93)	B (92 – 85)	C (84 – 78)	D (77 – 70)	F (69 and below)
8	12	9	1	2

Data Display # 1 – Categorical: Pie Chart

A	B	C	D	F
8	12	9	1	2
28%	38%	28%	3%	6%
90°	137°	101°	11°	21°



Data Display # 1 – Categorical: Bar Graph

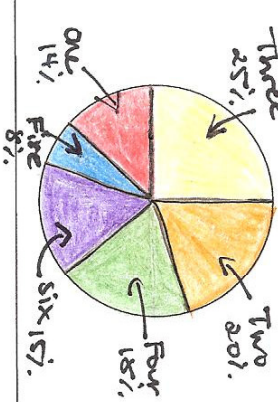


3.) Carmela rolled a die several times. Below shows how many times each number showed up.

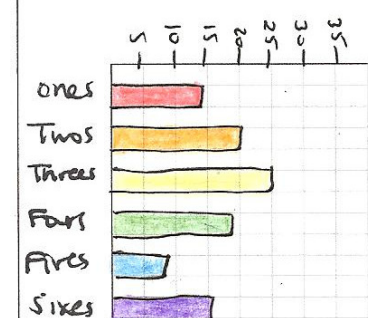
Ones	Twos	Threes	Fours	Fives	Sixes
14	20	25	18	8	15

Data Display # 1 – Categorical: Pie Chart

One	Two	Three	Four	Five	Six
14	20	25	18	8	15
14%	20%	25%	18%	8%	15%
50°	72°	90°	65°	29°	54°



Data Display # 1 – Categorical: Bar Graph

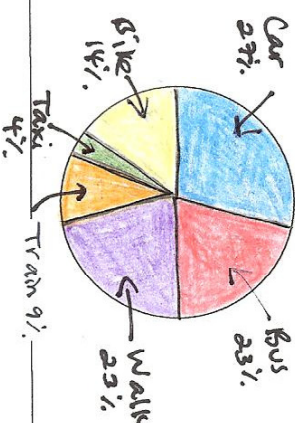


4.) Connor surveyed his Biology class to see how they got to school. Below are his survey results:

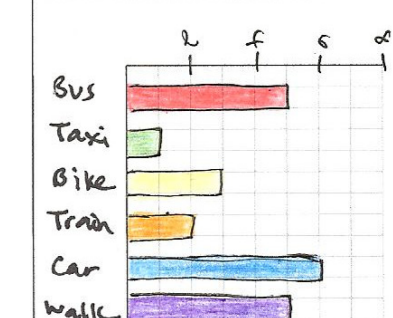
Bus	Taxi	Bike	Train	Car	Walk
5	1	3	2	6	5

Data Display # 1 – Categorical: Pie Chart

Bus	Taxi	Bike	Train	Car	Walk
5	1	3	2	6	5
23%	4%	14%	9%	27%	23%
83°	15°	50°	32°	97°	83°



Data Display # 1 – Categorical: Bar Graph



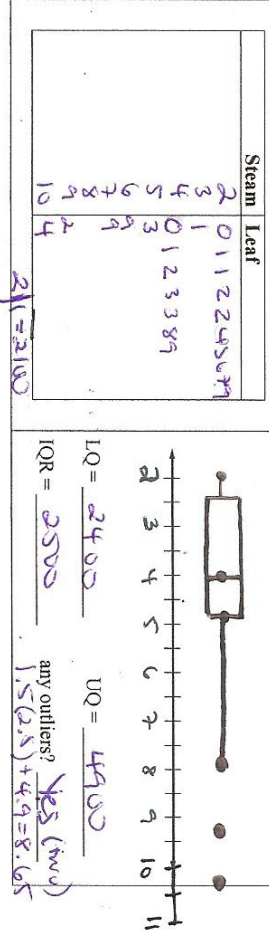
II. Using the given data - Make a stem-leaf plot and a box-whisker plot of the information. Make sure your box-whisker plot is labeled and graphed accurately and correctly.

- 5.) The table shows the land area of each county in Wyoming. Round each area to the nearest hundred square miles.

County	Area (mi ²)	County	Area (mi ²)	County	Area (mi ²)
Albany	4273	Hot Springs	2004	Sheridan	2523
Big Horn	3137	Johnson	4166	Sublette	4883
Campbell	4797	Laramie	2686	Sweetwater	10,425
Carbon	7896	Lincoln	4069	Teton	4008
Converse	4255	Natrona	5340	Uinta	2082
Crook	2859	Niobrara	2626	Washakie	2240
Fremont	9182	Park	6942	Weston	2398
Goshute	2225	Platte	2085		

Median = 4000

Data Display #2 - Quantitative: Stem-Leaf Plot Data Display #2 - Quantitative: Box-Whisker Plot



- 6.) The table shows the number of sacrifice hits made by teams in the National Baseball League in the 2001 season.

Team	Home Runs	Team	Home Runs
Arizona	84	Milwaukee	85
Atlanta	84	Montreal	84
Chicago	117	New York	84
Cincinnati	84	Philadelphia	87
Colorado	84	Pittsburgh	80
Florida	84	San Diego	87
Houston	84	San Francisco	87
Los Angeles	84	St. Louis	85

- a.) Make a stem-leaf plot below:

